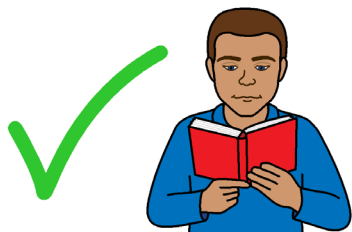


5 Safer places



Bushfire Safety Guide



Easy to read



**Government of
South Australia**

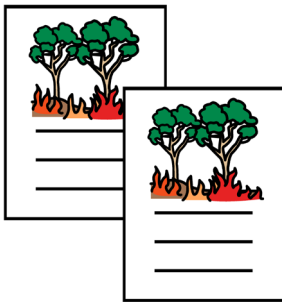




You **must** know a safer place you can go to.

Even if you choose to stay and defend you might change your mind because

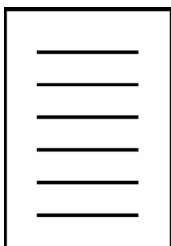
- you get scared
- the bushfire comes too fast
- it is **not** safe to drive
- you get sick.



You must have a

- a safer place that is your first choice
- and
- a back up plan.

Where can you go?



The CFS has a list of places you might go to.

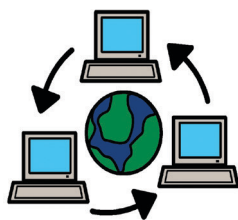
They are called **Bushfire Safer Places**.

How to get the list



Bushfire Information Hotline

phone 1800 362 361



Website www.cfs.sa.gov.au



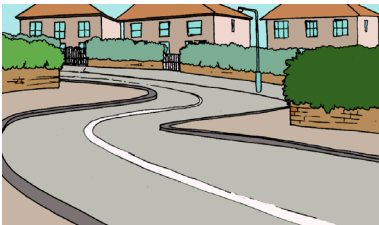
The safest place

The inner suburbs of Adelaide are the safest place. The CFS call inner suburbs

Bushfire Safer Places.

Inner suburbs of Adelaide are safer because they have

- lots of buildings
- roads
- only a few trees.



Places that may not be safe

Outer suburbs of Adelaide may **not** be safe.

- There are lots of trees and plants
- Burning twigs can blow around in the wind.

They might land on a house and start a fire

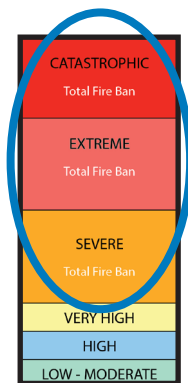
Places that may be safe

- Some outer suburbs
- and**
- large towns
- might be ok.

The CFS call

- outer suburbs
- and**
- large towns

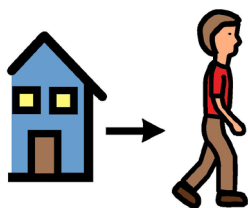
Bushfire Safer Places. Check with the CFS where you can go.



If the Fire Danger Rating is

- Catastrophic
- Extreme
- Severe

Leaving early is the safest thing to do.



Go to **Bushfire Safer Places**

- the night before
- or**
- in the morning.

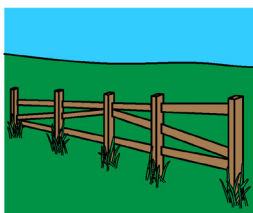


Last Resort Refuge

This is only your back up plan. Last Resort Refuge is **not** your first choice. You may be stuck in town. You can **not** leave.

- you get scared
- the bushfire comes too fast
- it is **not** safe to drive
- you get sick.

A Last Resort Refuge is a safer place in your town. For example, a



- paddock
 - **or**
 - oval
- with **no** trees.

Find the Last Resort Refuge near you.

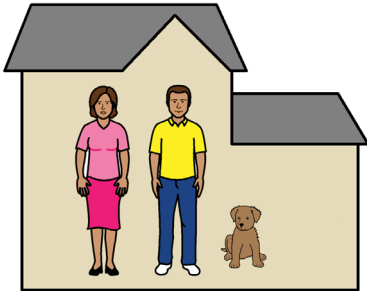
Check with the CFS.



Last Resort Refuge is very dangerous. You will be close to the bushfire. You might die.

It is safer to leave early. Go to

- the inner suburbs
- a safe outer suburb
- a safe large town
- a house that is fire ready.



You may get stuck at your house.

- Stay inside your house
- You need 2 ways to get out of a room
- Check for small fires in your house
- Tell someone you are at home



If your house is on fire leave your house. Go

- to a black bit of ground
- where the fire has burnt.



More information



Bushfire Information Hotline

Phone 1800 362 361



TTY phone 133 677

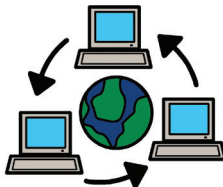
then ask for 1800 362 361



National Relay Service

Phone 1300 555 727

then ask for 1800 362 361



Website www.cfs.sa.gov.au



Go to your local Bushfire Blitz meeting.

Join or start a Community Fire Safe group for your area.

You can also use social media.



- Facebook

www.facebook.com/countryfireservice



- Twitter @CFSTalk

Scope's Communication Resource Centre wrote the Easy English in August 2013. www.scopevic.org.au

To see the original book, contact the Country Fire Service (CFS).

Mayer-Johnson LLC says we can use the Picture Communication Symbols © 1981 – 2013.

Mayer-Johnson LLC says we can use the ThinLine package.
© 2010 – 2013.

Valuing People

Valuing People ClipArt © Inspired Services, UK.
www.inspiredservices.org.uk